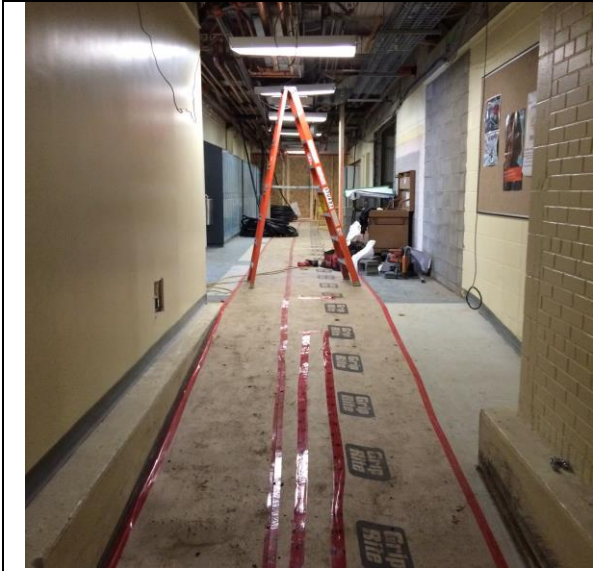


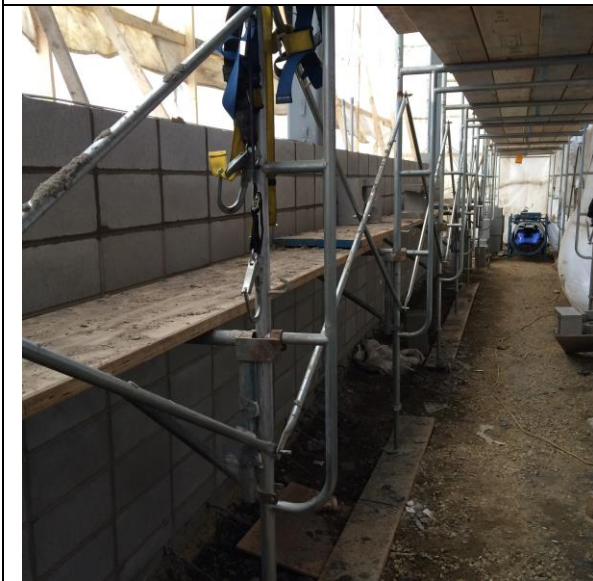
# Construction Progress Report



4.1- Rough in's in Corridor 1033



4.2- Food Studies u/s Plumbing being backfilled



4.3- Concrete Block Walls NW Corner Gym.

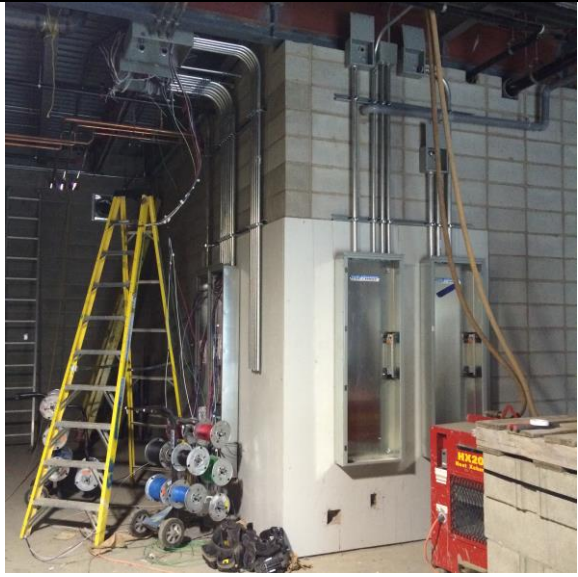


4.4- Block partition in Change Rooms

# Construction Progress Report



4.5- Electrical Room wall infill



4.6- Electrical rough in's in Gym storage



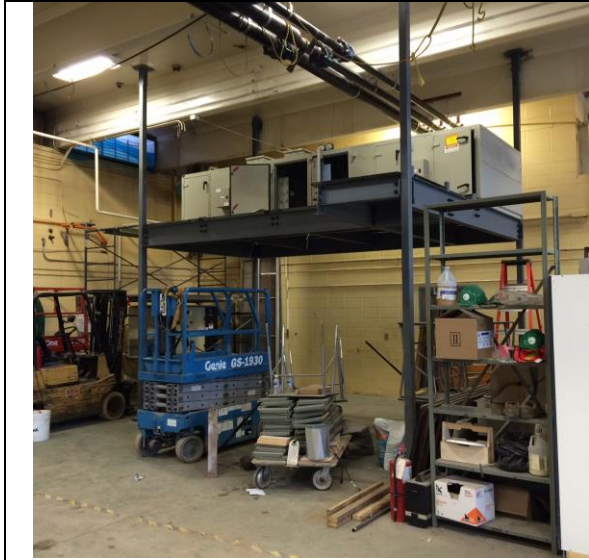
4.7- Commercial Kitchen u/s plumbing in progress.



4.8- Gym steel metal stud walls.



# Construction Progress Report



4.9- Maintenance room AHU Platform.



4.10- Science rooms Plumbing Insulation



4.11- Gym Roofing progressing.



4.12- New roof penetrations on existing roof.

## 5.0 Site Safety

Total incidents to report this period: 0

Total incidents onsite to date: 1

Total lost time incidents to date: 0